

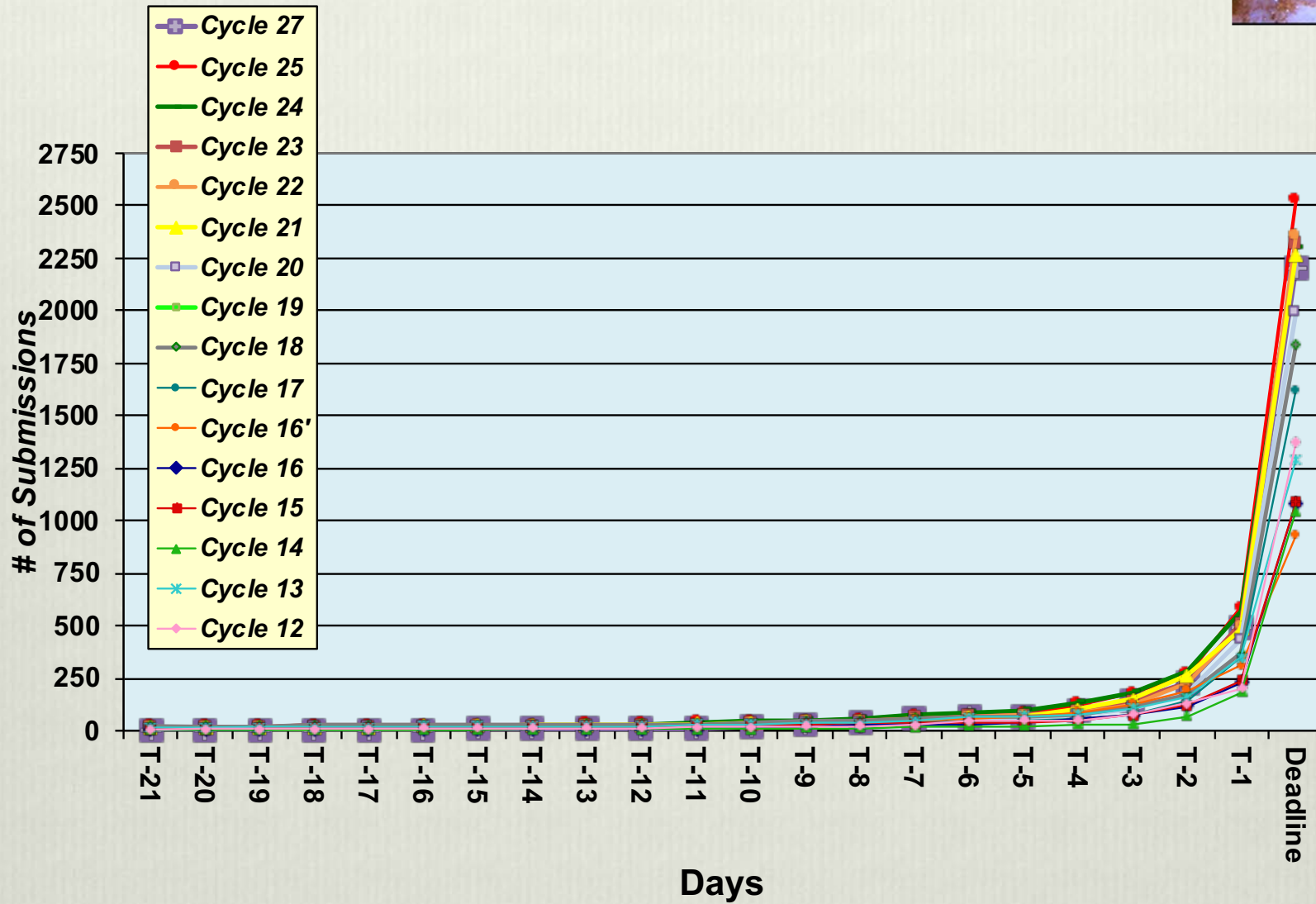
The Hubble Space Telescope is shown in a three-quarter view, floating in space. It has a long cylindrical body with various instruments and solar panels. The background is a deep black space filled with numerous stars and galaxies of various colors and shapes. Below the telescope, the blue and white clouds of Earth are visible, indicating the telescope's orbit.

Cycle 27 Submission Statistics

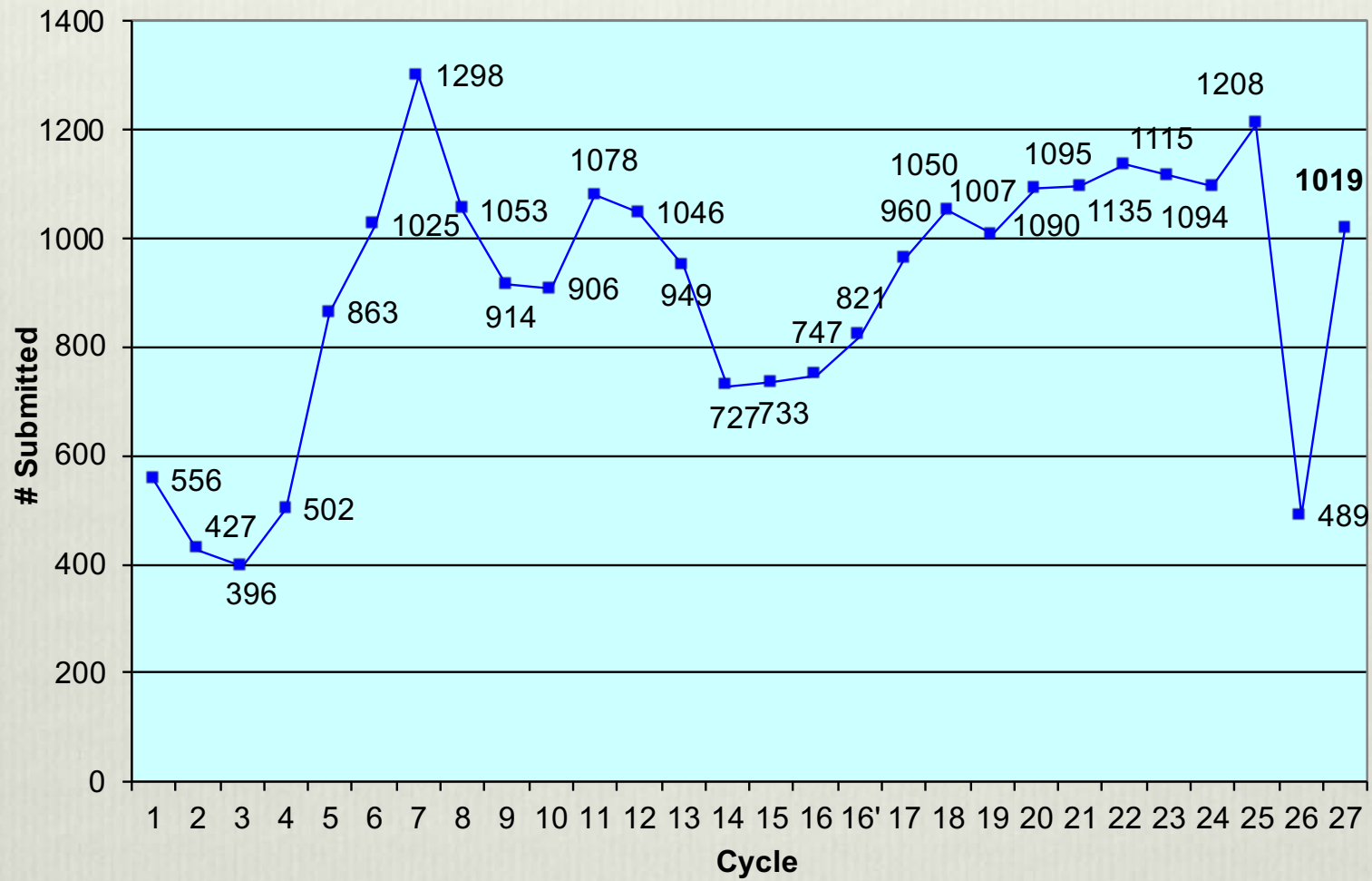
**Brett S. Blacker
Science Mission Office**

http://www.stsci.edu/hst/proposing/panel/peer_review

HST Phase I Proposal Submissions/Resubmissions

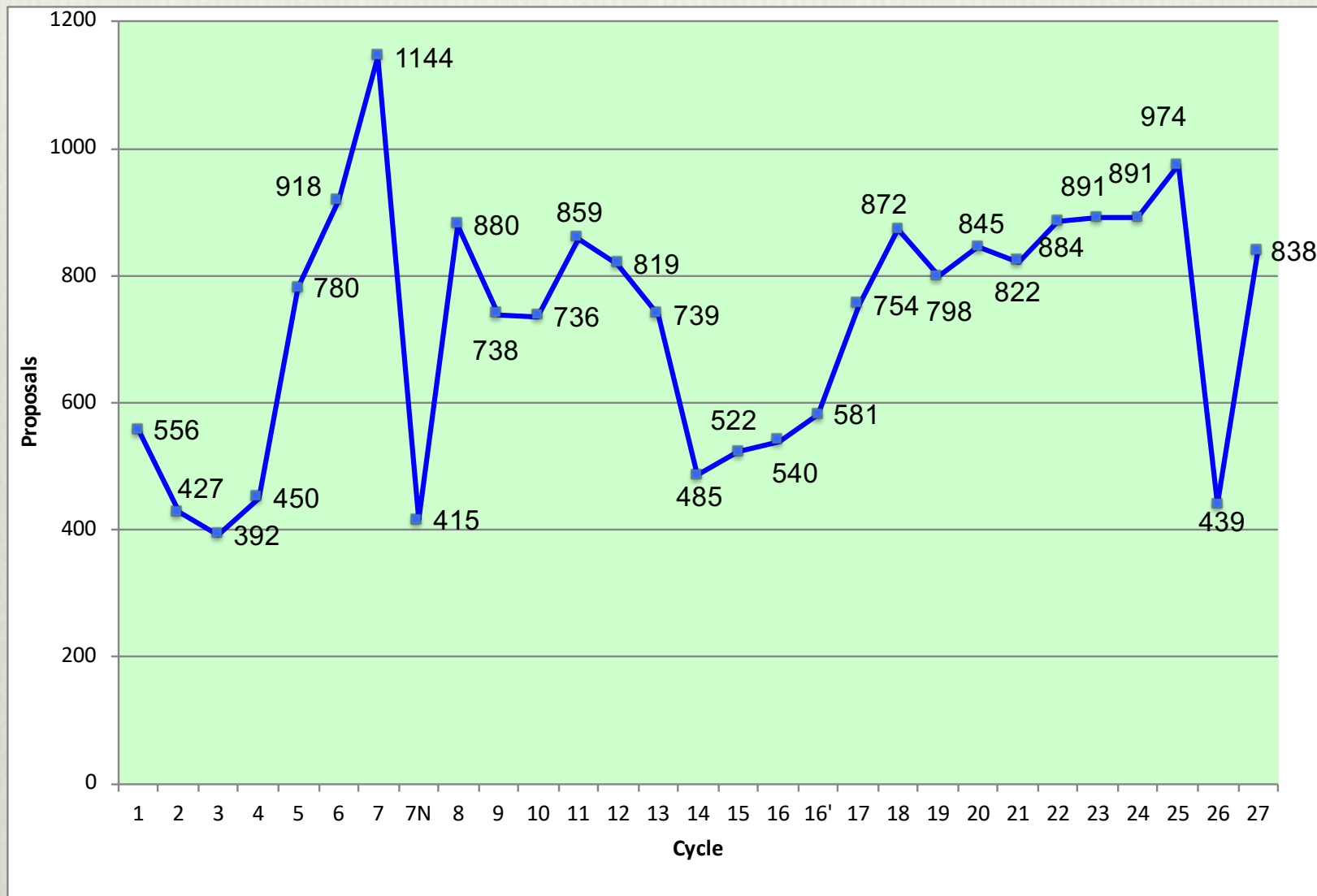


HST Proposal Submissions



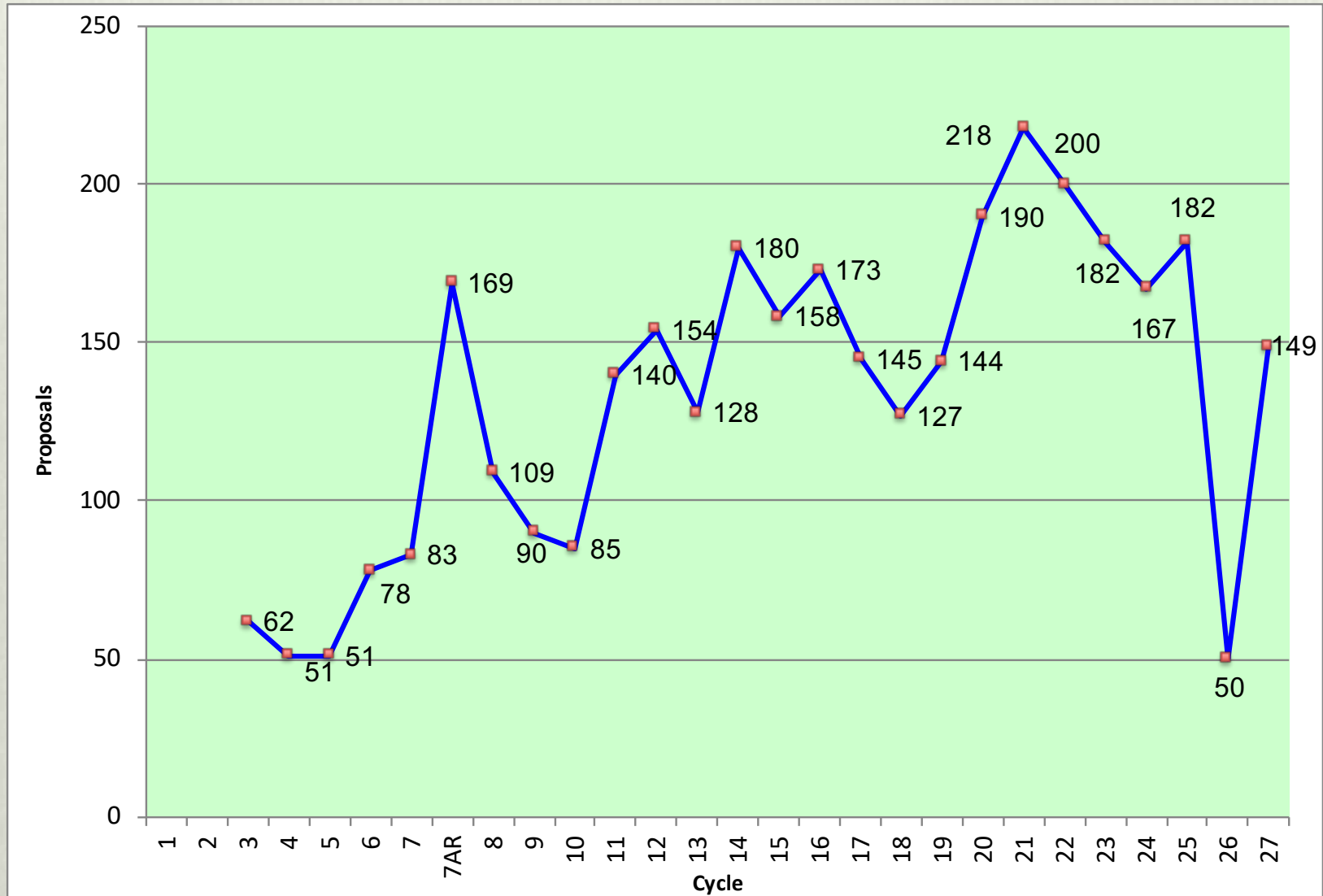


GO Submissions by Cycle



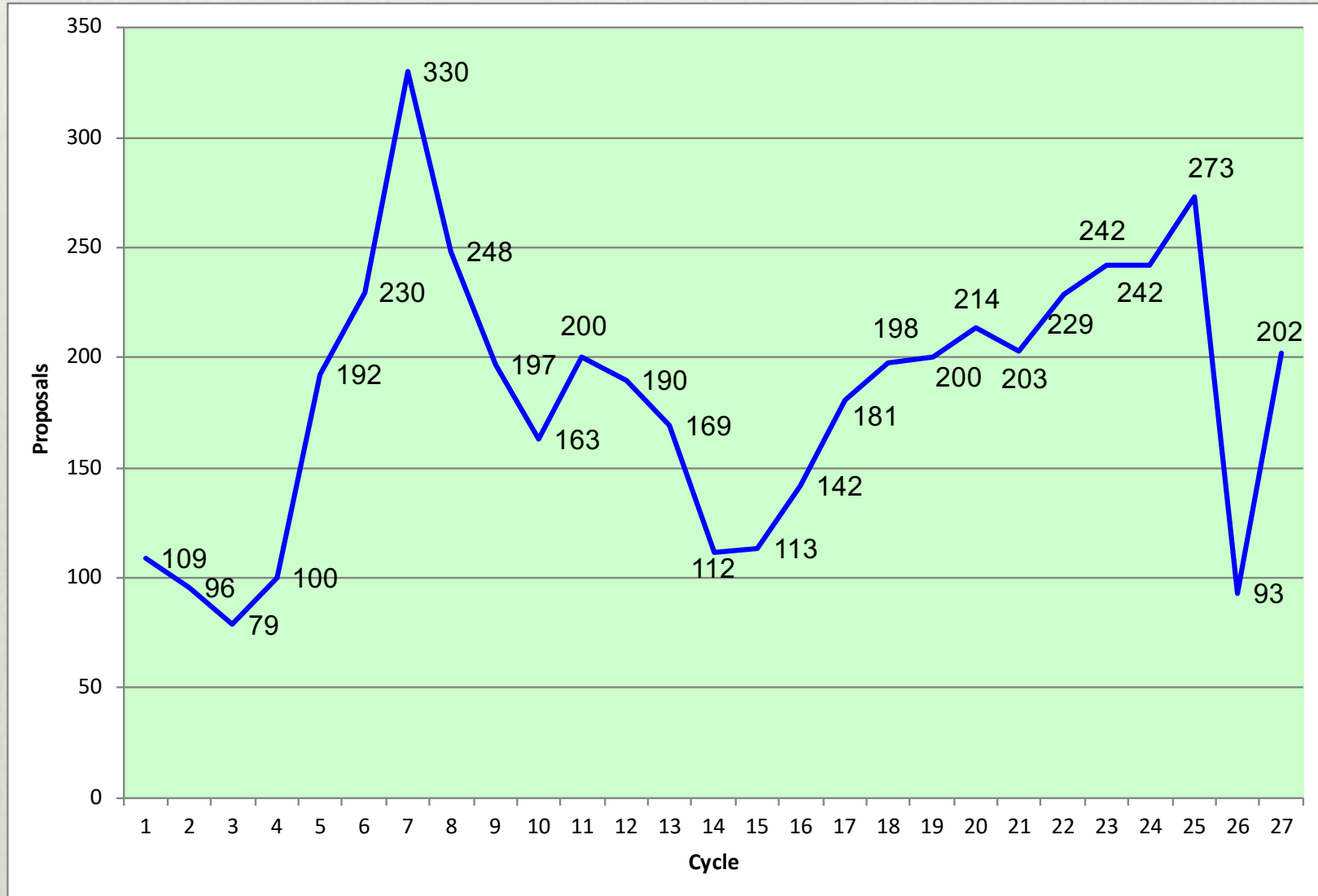


AR Proposals by Cycle

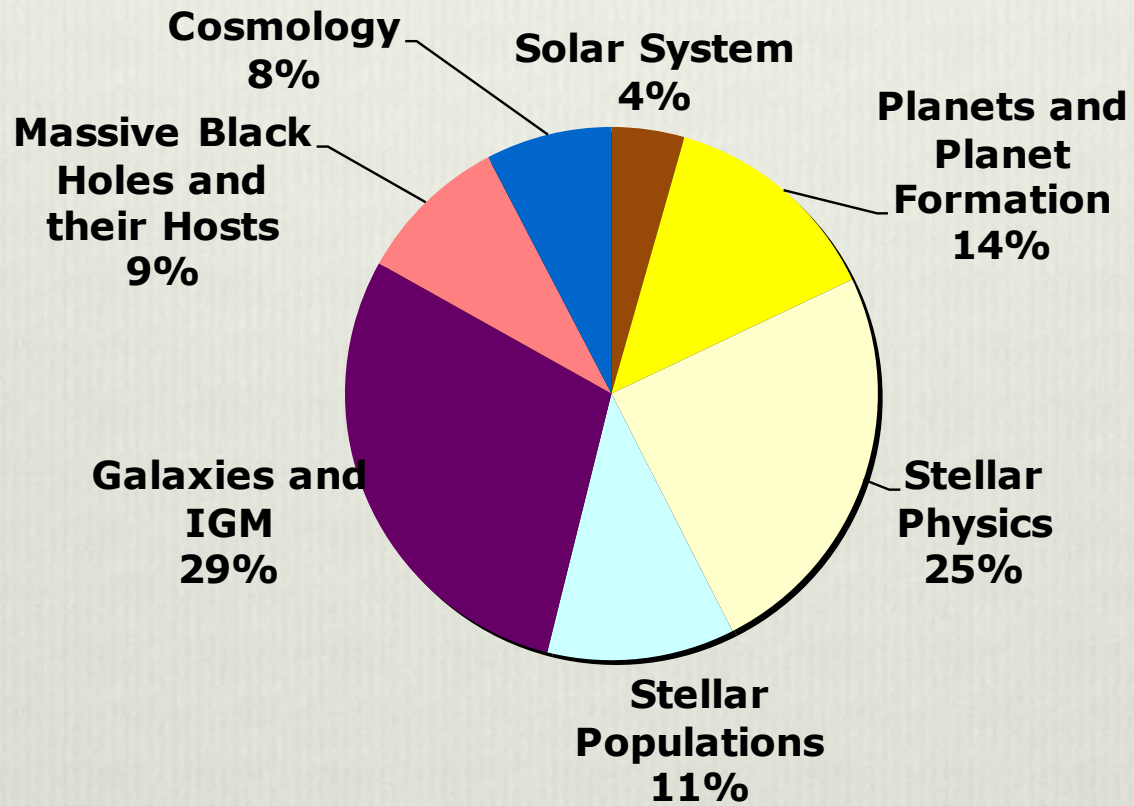




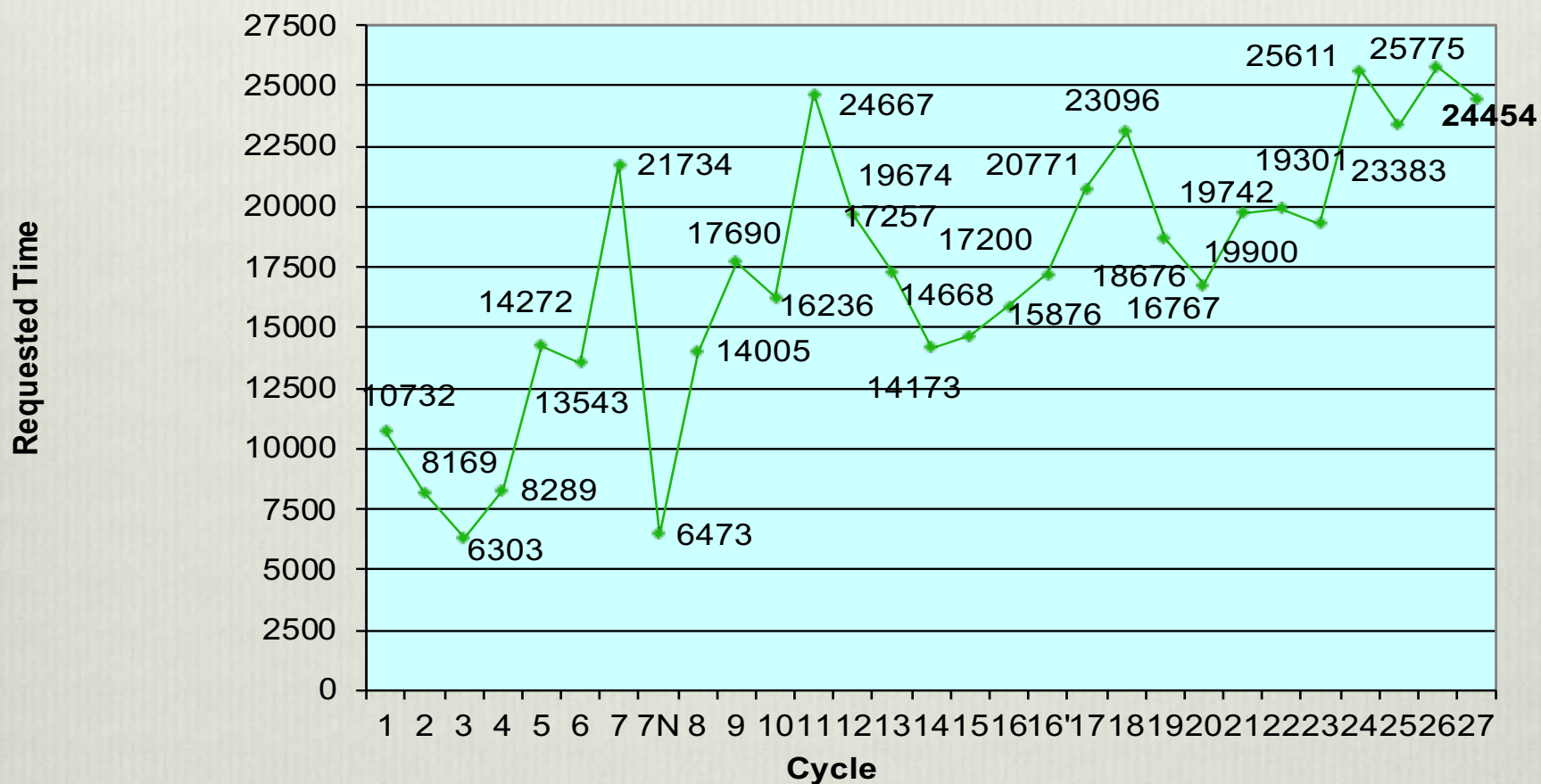
ESA Proposal Submissions



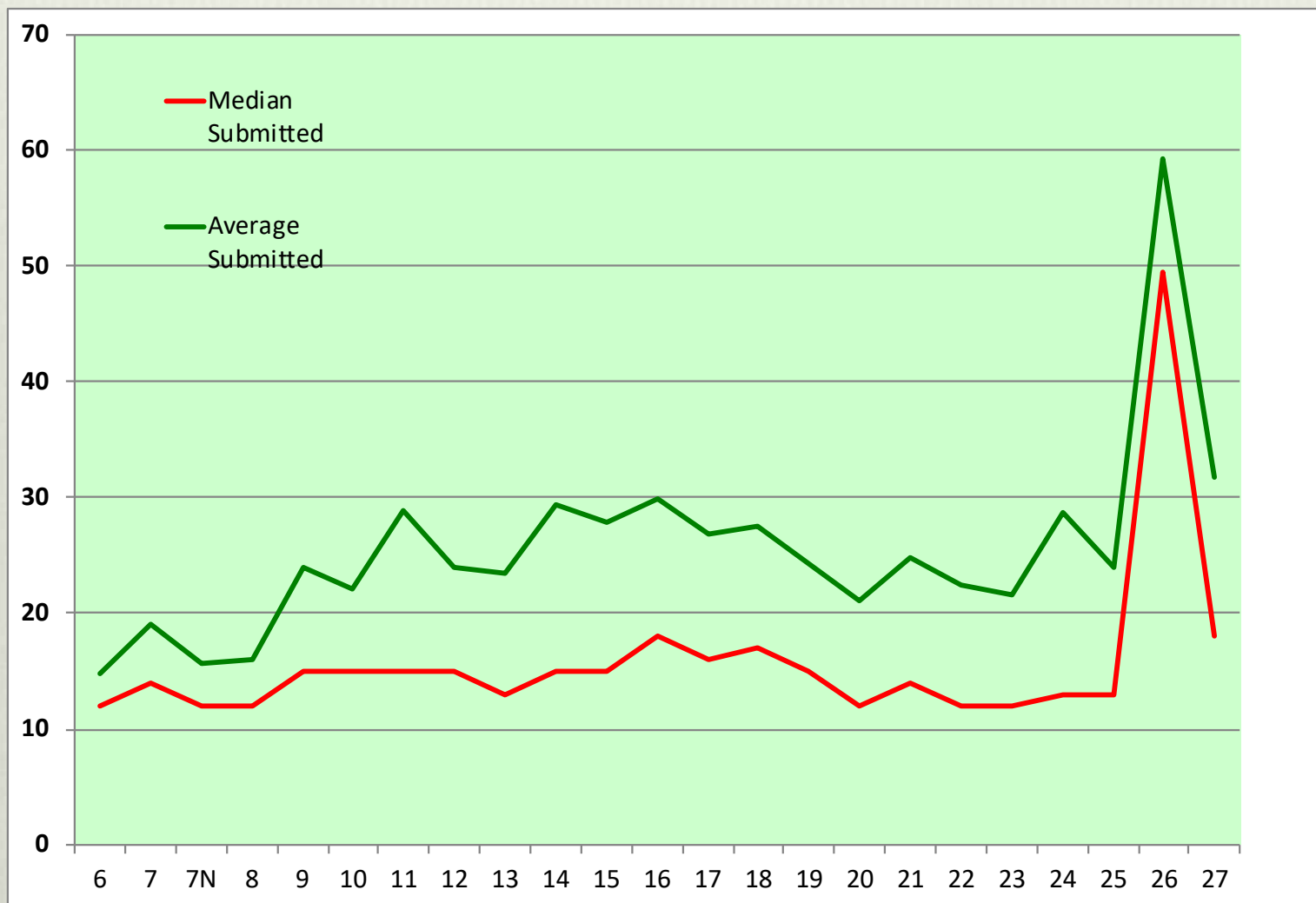
Proposals by Science Categories



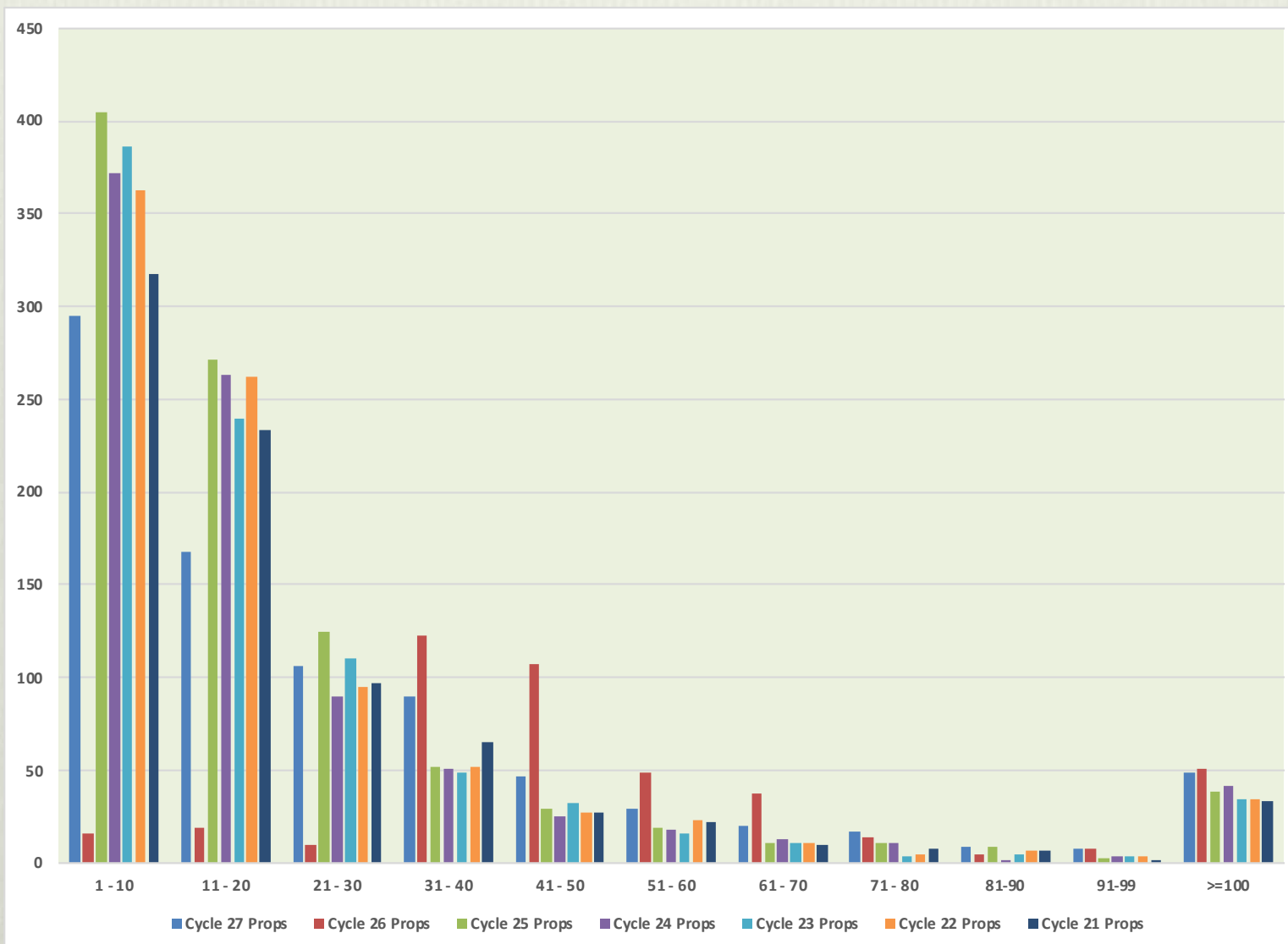
Orbits Requested



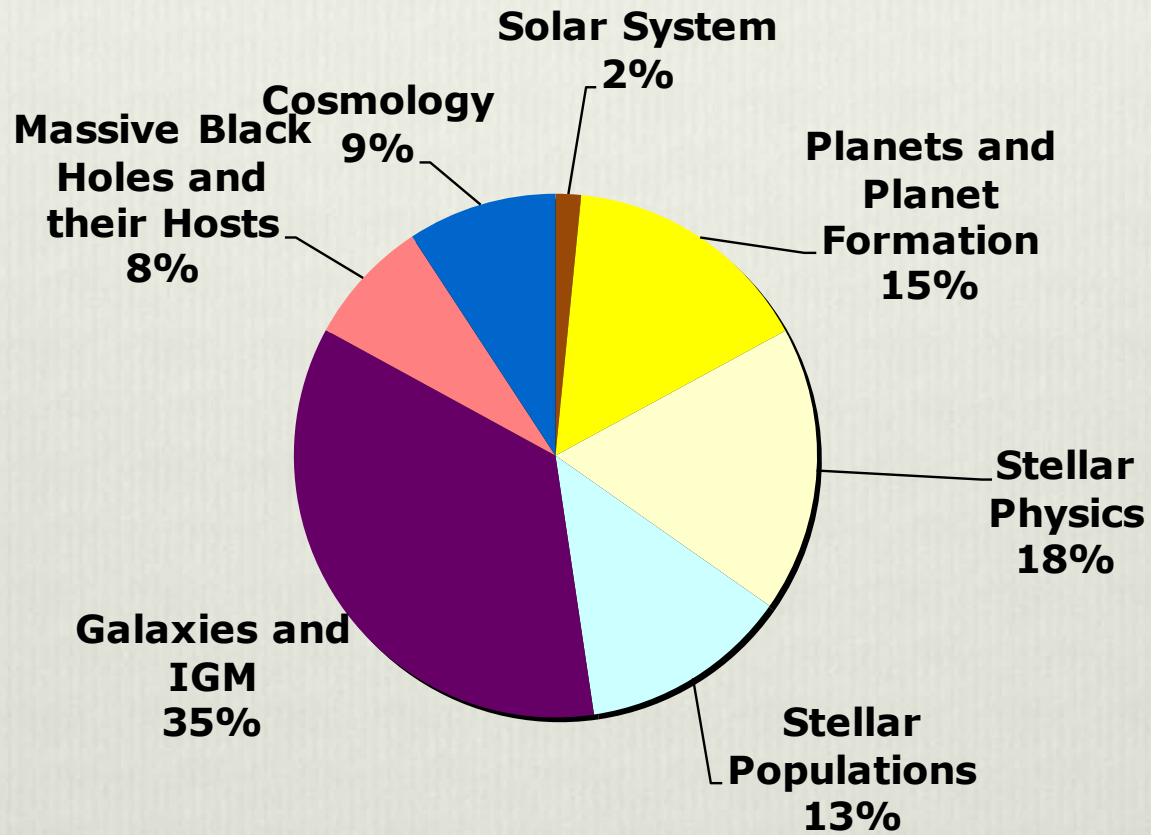
Orbit Size



Shift to Larger Proposals

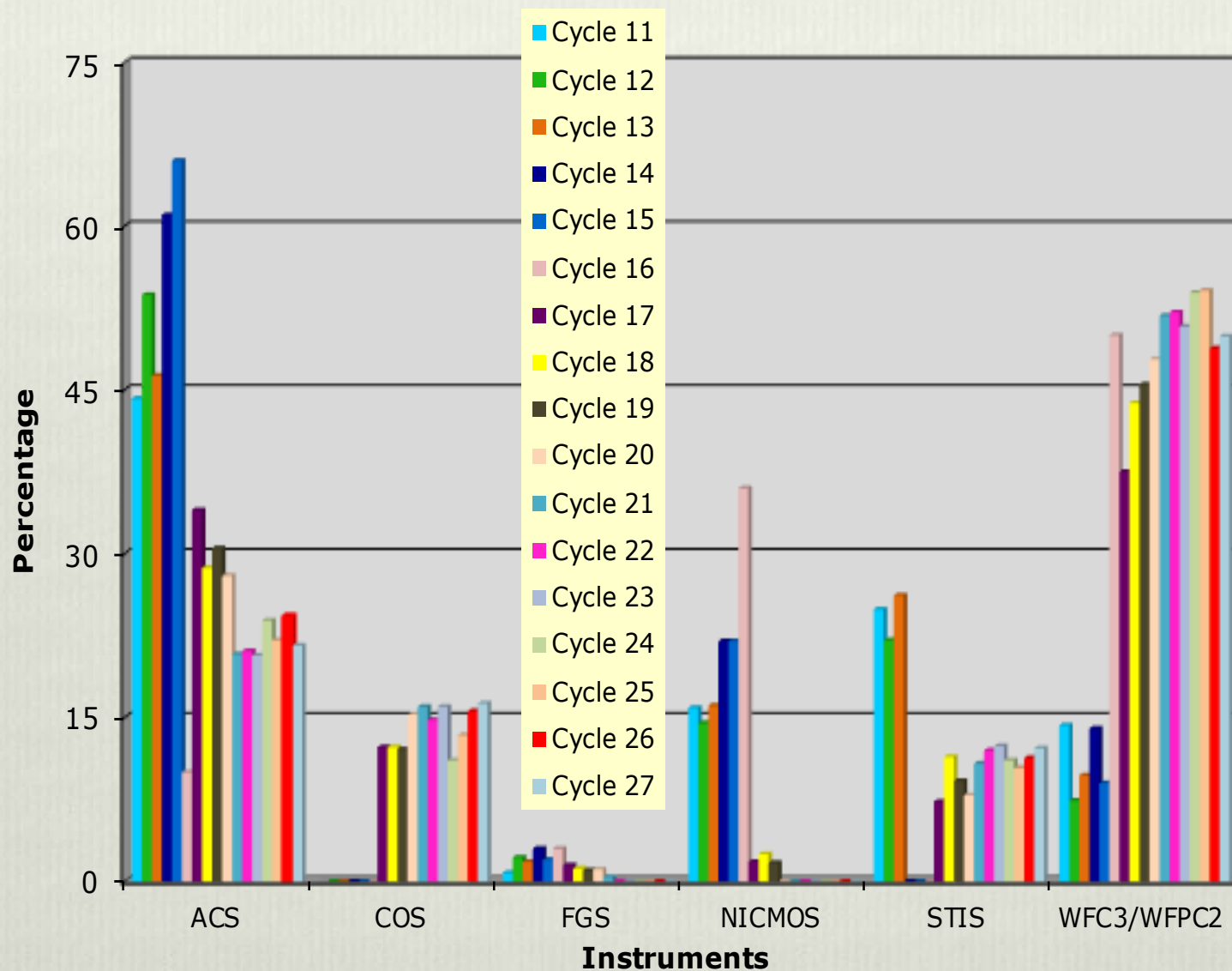


Orbits by Science Categories





GO Requested Instruments



Cycle 27 Instrument Summary



| Configuration | Mode | Prime % | Coordinated Parallel % | Total | Instrument Prime Usage | Instrument Prime + Coordinated Parallel Usage | Pure Parallel Usage | Snap Usage |
|---------------|--------------|---------|------------------------|--------|------------------------|---|---------------------|------------|
| ACS/SBC | Imaging | 1.6% | 0.0% | 1.3% | | | 0.0% | 0.0% |
| ACS/SBC | Spectroscopy | 0.1% | 0.0% | 0.0% | | | 0.0% | 0.0% |
| ACS/WFC | Imaging | 15.0% | 37.6% | 19.8% | | | 5.0% | 14.0% |
| ACS/WFC | Ramp Filter | 0.7% | 0.0% | 0.5% | 17.3% | 21.6% | 0.0% | 0.0% |
| ACS/WFC | Spectroscopy | 0.0% | 0.0% | 0.0% | | | 0.0% | 0.0% |
| COS/FUV | Spectroscopy | 17.7% | 0.0% | 13.9% | | | 0.0% | 0.0% |
| COS/NUV | Imaging | 0.1% | 0.0% | 0.1% | 20.7% | 16.3% | 0.0% | 0.0% |
| COS/NUV | Spectroscopy | 2.9% | 0.0% | 2.3% | | | 0.0% | 0.0% |
| FGS | POS | 0.0% | 0.0% | 0.0% | 0.0% | 0.0% | 0.0% | 0.0% |
| FGS | TRANS | 0.0% | 0.0% | 0.0% | | | 0.0% | 0.0% |
| STIS/CCD | Imaging | 1.4% | 0.0% | 1.1% | | | 0.0% | 0.0% |
| STIS/CCD | Spectroscopy | 3.4% | 0.2% | 2.7% | | | 0.0% | 9.5% |
| STIS/FUV | Imaging | 0.3% | 0.0% | 0.2% | 15.3% | 12.2% | 0.0% | 0.0% |
| STIS/FUV | Spectroscopy | 5.7% | 0.2% | 4.5% | | | 0.0% | 2.7% |
| STIS/NUV | Imaging | 0.0% | 0.0% | 0.0% | | | 0.0% | 0.0% |
| STIS/NUV | Spectroscopy | 4.5% | 0.2% | 3.6% | | | 0.0% | 0.0% |
| WFC3/IR | Imaging | 14.8% | 27.2% | 17.4% | | | 59.0% | 39.5% |
| WFC3/IR | Spectroscopy | 10.0% | 2.4% | 8.4% | 46.7% | 49.9% | 1.0% | 0.0% |
| WFC3/UVIS | Imaging | 21.1% | 32.2% | 23.4% | | | 35.0% | 34.3% |
| WFC3/UVIS | Spectroscopy | 0.8% | 0.0% | 0.7% | | | 0.0% | 0.0% |
| | | 100% | 100.0% | 100.0% | 100.0% | 100.0% | 100.0% | 100.0% |

Prime + Coordinated Parallels
 64% Imaging
 36% Spectroscopy



Other Tidbits

| Archival Research | # of Proposals |
|-------------------|----------------|
| Regular | 69 |
| Theory | 57 |
| AR Legacy | 23 |

| Joint Observatory | Proposals | Requested Time | HST Orbits |
|-------------------|-----------|----------------|--------------|
| Chandra | 12 | 1617 Ksecs | 690 |
| NOAO | 14 | 46 Nights | 768 |
| NRAO | 10 | 384 Hours | 546 |
| TESS | 1 | 8 Targets | 40 + 40 + 40 |
| XMM | 13 | 797 Ksecs | 557 |

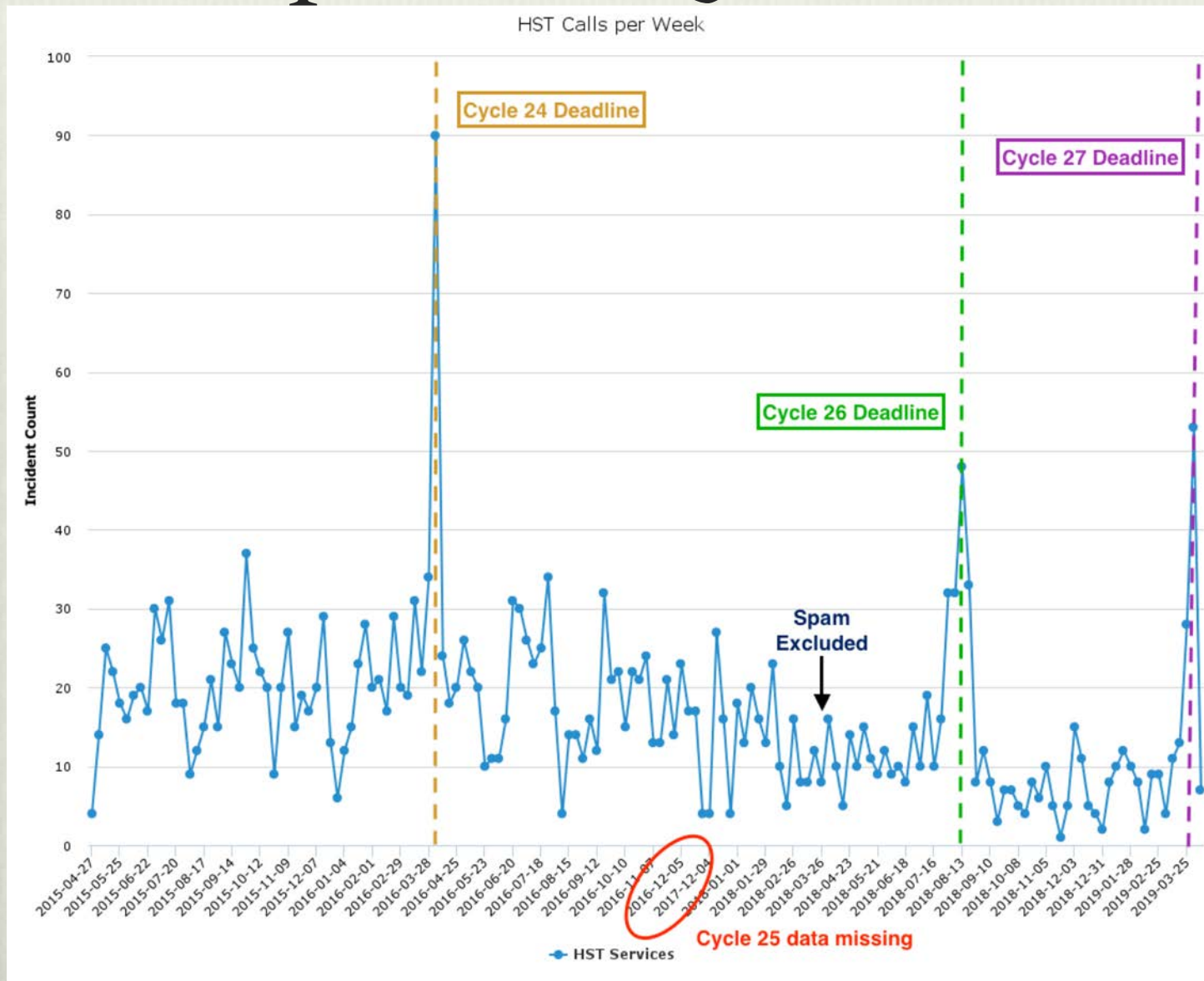
More Tidbits



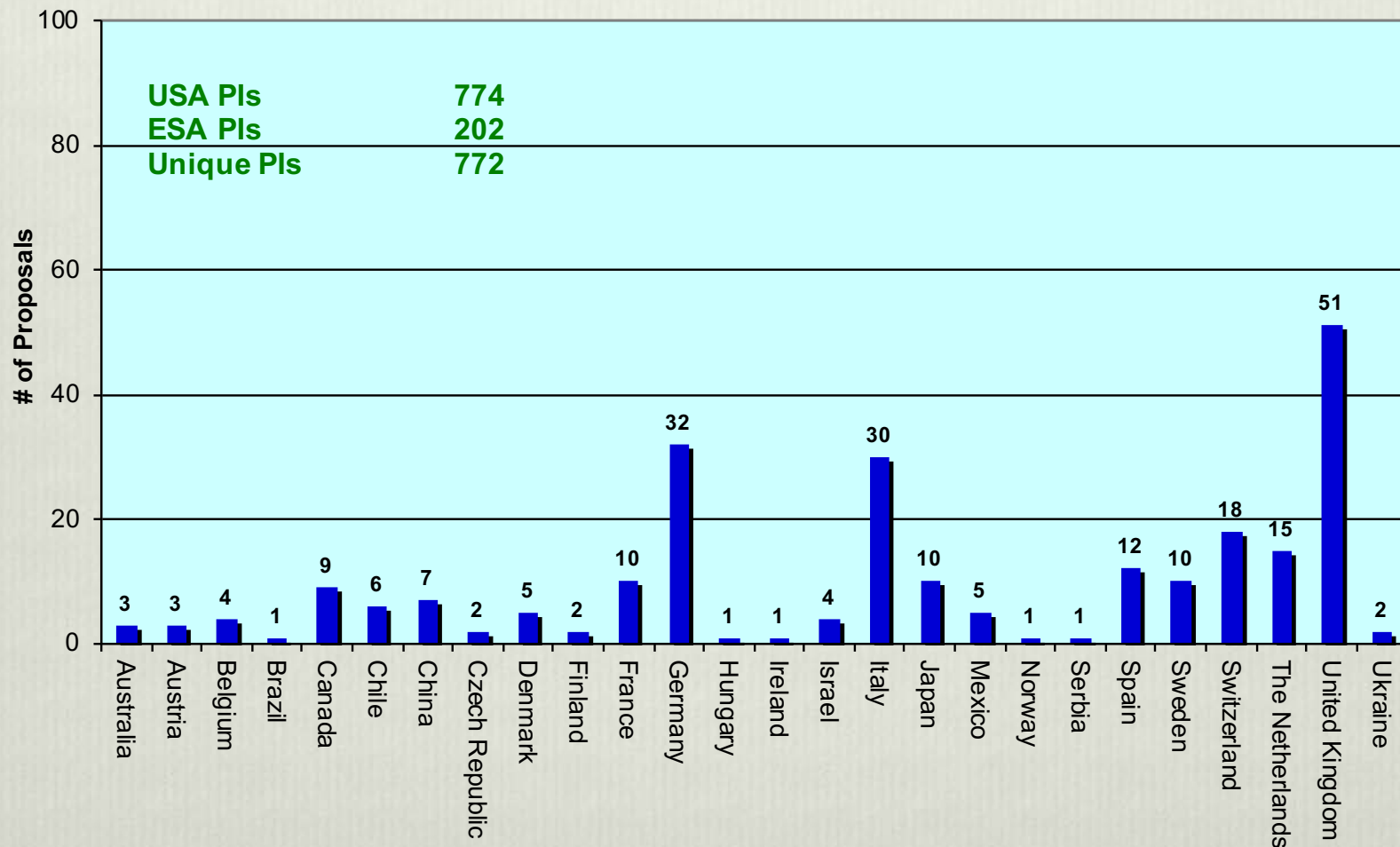
- ❖ 37 Target of Opportunity Proposals:
 - ❖ 19 Disruptive, 18 non-Disruptive and 9 Both
 - ❖ 21 Long Term
 - ❖ Requesting 1,030 orbits

- ❖ Proposal Special Categories
 - ❖ Mediums: 169 for 8,025 orbits
 - ❖ Large: 54 for 5147 orbits
 - ❖ Treasury: 26 for 3,428 orbits
 - ❖ UV Initiative: 388 GOs for 11,346 orbits and 40 ARs
 - ❖ JV Prep: 77 proposals for 4,245 orbits
 - ❖ Fundamental Physics: 24 proposals for 1,241 orbits
 - ❖ Pure Parallel: 9 proposals for 2,149 orbits
 - ❖ 5 AR Cloud Computing proposals
 - ❖ 8 Calibration
 - ❖ 4 AR and 4 GO for 38 orbits

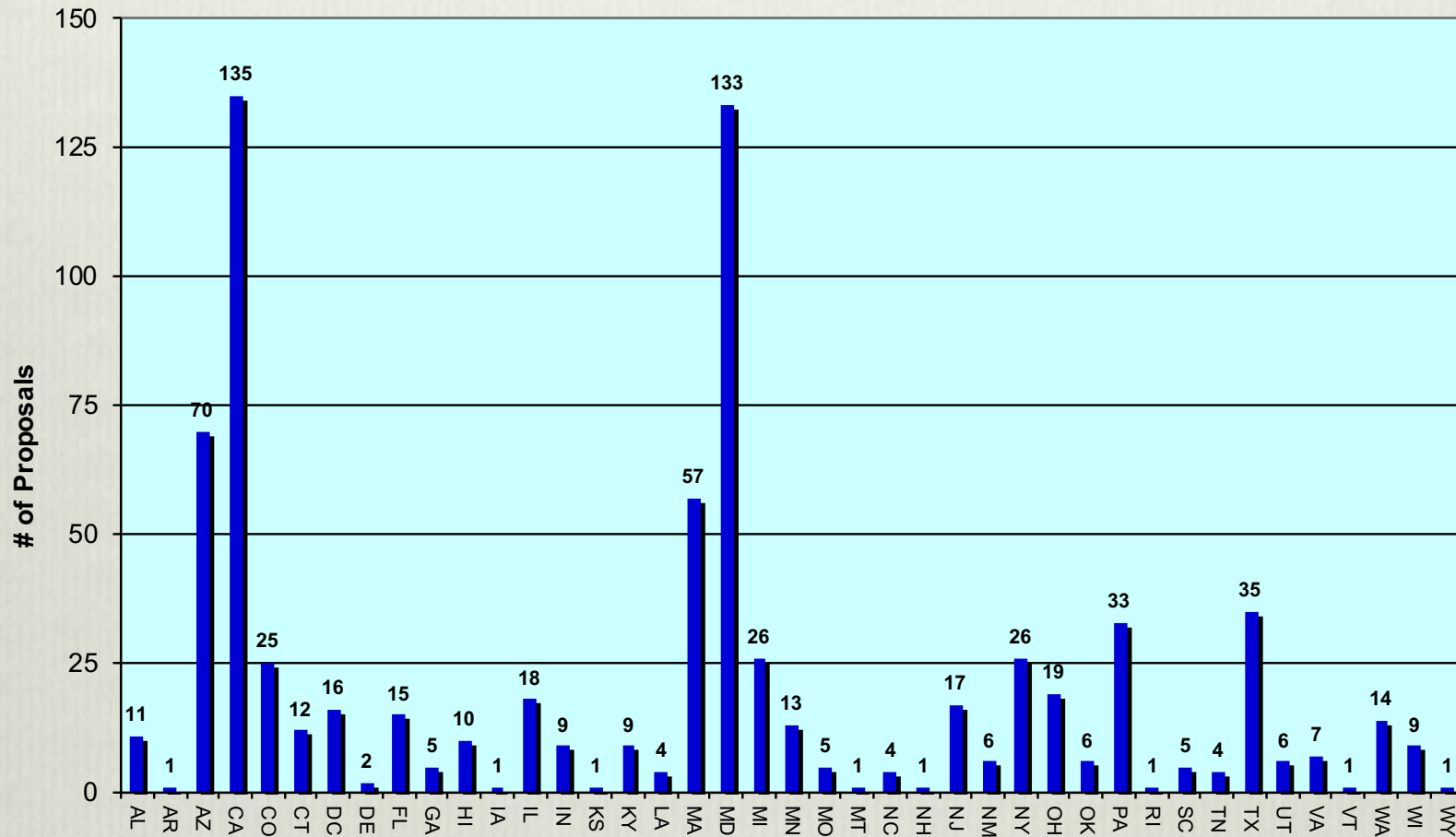
Help Desk Questions



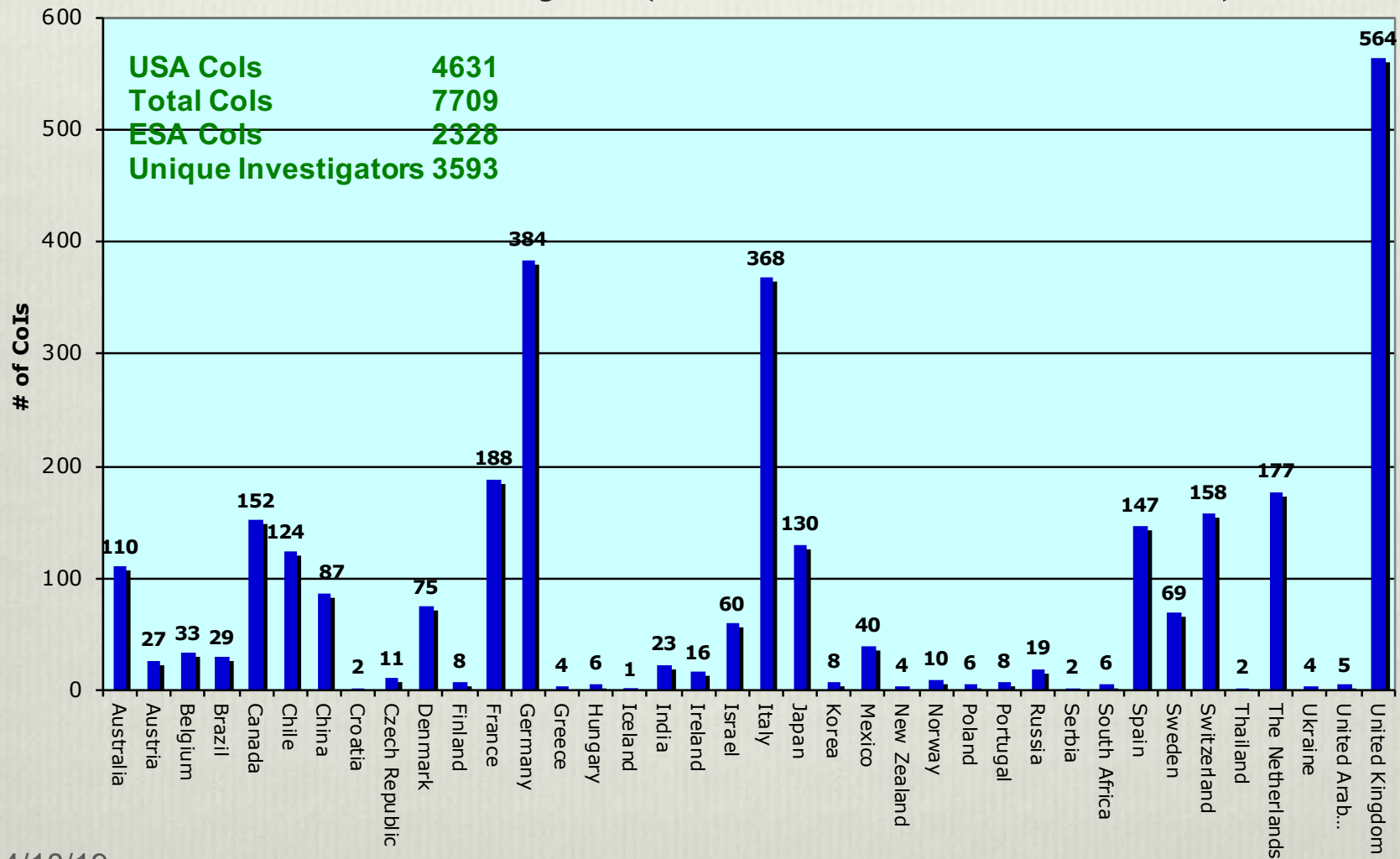
Proposals by Country (w/out USA)



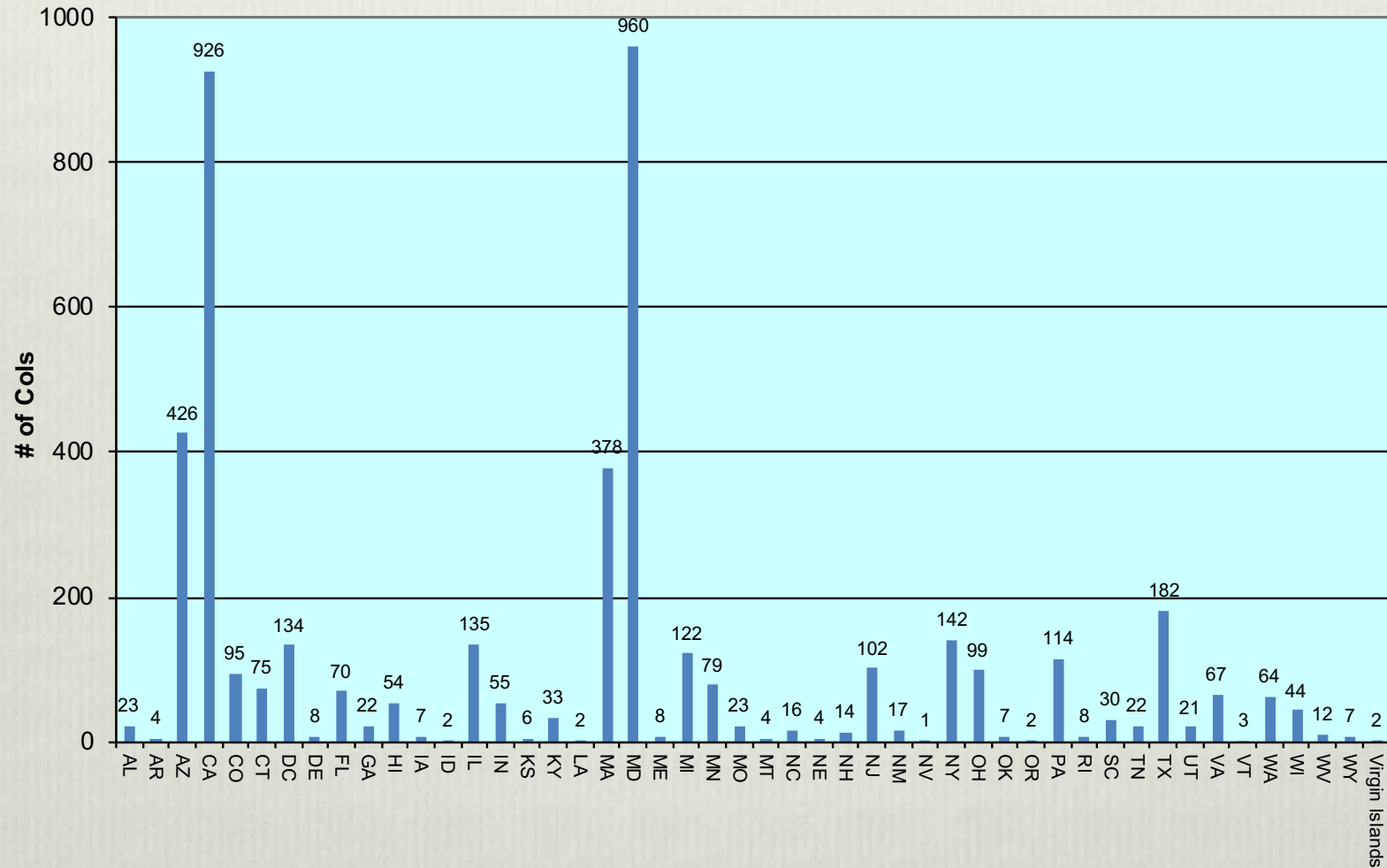
Proposals by US State



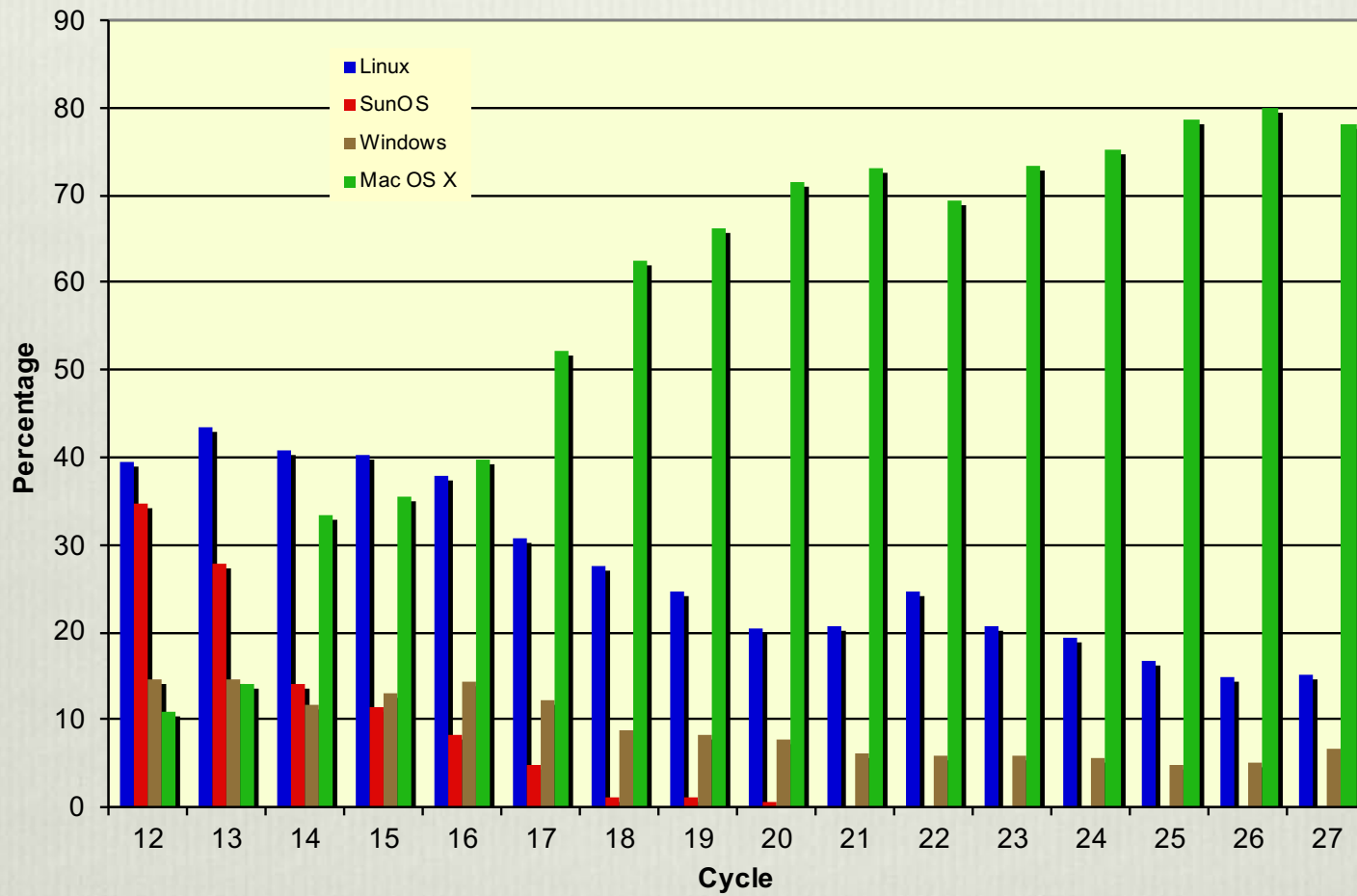
Co-Investigators by Country (w/out USA)



Co-Investigators by US State



APT Submissions by Op System





Proposal Submissions/Resubmissions on Day of Deadline

